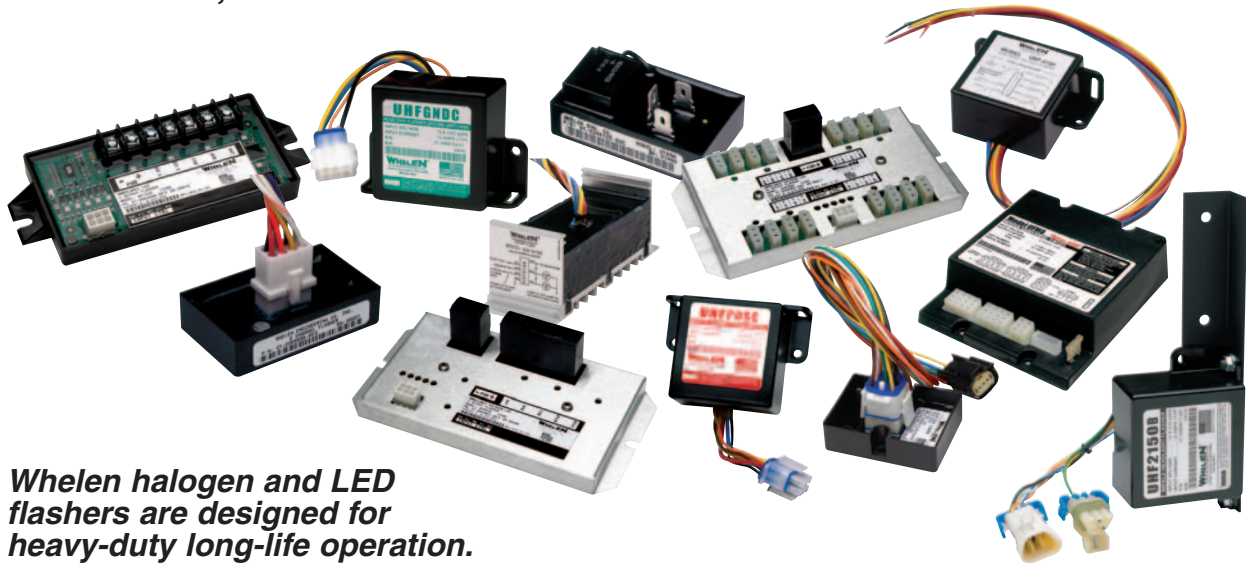


Halogen and LED Flashers

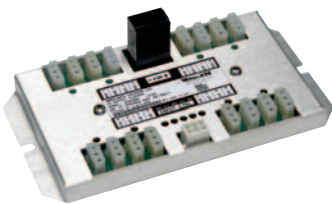
HEADLIGHT, GRILLE LIGHT & SYSTEM FLASHERS



Whelen halogen and LED flashers are designed for heavy-duty long-life operation.

Whether you require a complete certified ambulance system or headlight flashers for your vehicle, Whelen can provide you with the reliable solid-state products you require.

Three new KKK-E certified ambulance flashers provide input controls for KKK-1822A Mode 1 and Mode 2 operation, Scan-Lock™ multi-flash patterns, and Low Power mode. All outlets are high side driven. All models provide LED service indicators and have a two year warranty.



AFM1660

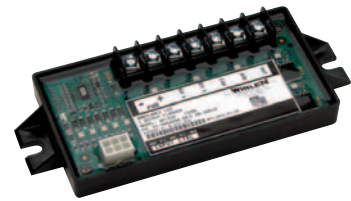
Two wire design 16 outlet halogen, LED or Super-LED® ambulance flasher. Each outlet will operate up to a 65 watt lamp (5 amps). Short circuit and thermal protected. For interior use only. AMP Mate-N-Lok® connectors.

Dimensions: 5/8" (15mm) H x 7-1/4" (184mm) W x 3-13/16" (97mm) D.



AFM560

Five outlet Halogen, LED or Super-LED ambulance flasher. One wire design using a quick install, high current terminal block. Three outlets will operate up to four 65 watt lamps (20 amps); two outlets will operate two 65 watt lamps (10 amps). Four Scan-Lock flash patterns. Short circuit and thermal protected. Ground wire may be chassis grounded for ease of installation. For interior use only. Dimensions: 5/8" (15mm) H x 7-1/4" (184mm) W x 3-13/16" (97mm) D.



AFL530

Five outlet LED or Super-LED ambulance flasher. One wire design using a quick install 7-position screw terminal block. Three outlets will drive up to 10 amps each, and two outlets will drive 5 amps each. Short circuit and thermal protected. Ground wire may be chassis grounded for ease of installation. Encapsulated for heavy-duty, water resistant performance. Four Scan-Lock flash patterns. Dimensions: 5/8" (15mm) H x 6-1/2" (65mm) W x 2-3/4" (70mm) D.



All Whelen Products
are proudly made
in the U.S.A

WHELEN[®]
Engineers for the Emergency Warning Industry

Form# FLSH0207

UNIVERSAL HALOGEN & LED FLASHERS

UFM8

Eight outlet solid-state, Universal® Halogen-LED flasher. Selective switching system (2x2x2x2 switching) separately controls the operation of each pair. Seventeen selectable flash patterns including a Traffic Advisor™ pattern. Dimensions: 1-3/4" (44mm) H x 5-7/8" (149mm) W x 6-3/4" (171mm) D.



ULF22

LED or Super-LED® flasher. Two outlet, two channel flasher with 14 Scan-Lock™ flash patterns, each having an alternating, simultaneous, or alternating/simultaneous selectable sequence. Each outlet can drive up to 5 amps and is short circuit and thermally protected. Input controls include, Scan-Lock and Low Power. Encapsulated design for water resistance and rugged performance. Dimensions: 1-5/8" (41mm) H x 1-1/2" (38mm) W x 2-1/2" (64mm) L.



ULF28

LED or Super-LED flasher with synchronization. Eight outlet two channel flasher with 9 Scan-Lock flash patterns. 4 flash patterns can be either selected as alternating, simultaneous sequences including an SSNF flash pattern. Each channel can drive up to 5 amps and is short circuit and thermally protected. Input controls include, Scan-Lock and synchronization. Encapsulated design for water resistance and rugged performance. Dimensions: 1-5/8" (41mm) H x 2" (50mm) W x 2-3/4" (70mm) L.



3TERM

Economical, two 20 amp outlet, three terminal, 240 watts per outlet flasher. Simultaneous or alternate flashing lights. Dimensions: 5/8" (16mm) H x 1-1/2" (38mm) W x 2-1/2" (64mm) L.



HEADLIGHT FLASHERS

A full featured, 100% solid-state headlight flasher for Crown Victoria, including connections for "plug and play" convenience of installation.



SSFPOS

Solid-state, 2 outlet, 160 watts per outlet, seven flash patterns, (replaces SS2150).

SSFPOSC6

Solid-state reliability, designed for 2006-2007 Ford Crown Victoria Police Package, with encapsulated electronics. Scan-Lock™ provides seven flash patterns which can be accessed via a momentary switch. 12.8 VDC, and 12.5 amps output. Includes Weatherpak plug & play connectors for ease of installation.

Dimensions: 7/8" (22mm) H x 2" (50mm) W x 2-3/4" (70mm) L.

UHFPOS & UHFPOSC

Same specifications as UHF2150A except positive switching headlights only. UHFPOSC includes mating connectors with 18" pigtail and the Bi-Pass connect used when uninstalling headlight flasher. Both have 4 flash patterns. Dimensions: 3" (76mm) H x 1-1/2" (38mm) D x 4-3/16" (108mm) W.



UHFGND & UHFGNDC

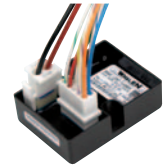
Same specs as UHFPOS & UHFPOSC except negative switching headlights only. Dimensions: 3" (76mm) H x 1-1/2" (38mm) D x 4-3/16" (108mm) W.



TAILLIGHT FLASHERS

SSF5150D

100% Solid-state, 2006 Ford Crown Victoria compatible, for positive switching taillights with five flash patterns. Dimensions: 7/8" (22mm) H x 2" (50mm) W x 2-3/4" (70mm) L.



UBF5150

2004-2005 Ford Crown Victoria police package taillight flasher. Dimensions: 3" (76mm) H x 1-1/2" (38mm) D x 4-3/16" (108mm) W.



HEADLIGHT & TAILLIGHT

UHF2150A & UHF2150B

Two outlet, 162 watts per outlet Headlight/Grille light flasher in a compact molded polycarbonate housing with external mounting flanges. For use on positive or negative headlight switching. Solid-state controlled relay output. Four flash patterns. UHF2150B is for 2002-2005 Chevy Impala police package only. Dimensions: 3" (76mm) H x 1-1/2" (38mm) D x 4-3/16" (108mm) W.



SSFPOSI6

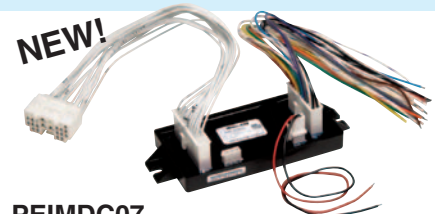
Solid-state reliability, designed for 2006-2007 Chevy Impala Police Package & 2007 Chevy Tahoe Police Package, with encapsulated electronics. Scan-Lock™ provides seven flash patterns which can be accessed via a momentary switch. 12.8 VDC, and 12.5 amps output. Includes Weatherpak plug & play connectors for ease of installation. Dimensions: 7/8" (22mm) H x 2" (50mm) W x 2-3/4" (70mm) L.



NEW!

PEIMDC07

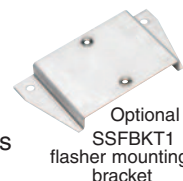
This module provides conditioned signals to and from the Police Equipment Interface Module (PEIM) for 2006 Dodge Charger police vehicles. Flashes headlights and taillights. See PEIMDC07 product bulletin for a complete list of features.



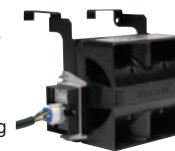
LED LIGHTHEAD OPTIONS

LEDLOAD, In-line "Load" Resistor Kit to Interface with OEM Turn Signal Circuit.

52TRUNKT, Trunk warning light installation kit for two 500 Series LED lightheads (purchased separately) for Crown Vic, Explorer and Expedition.



Optional SSFBKT1 flasher mounting bracket



SSFBKT1 flasher bracket shown mounted to SABKT17 speaker bracket and SA314 speaker.

SPECIFICATIONS

MODELS	PEIMDC07	UHF2150A UHF2150B UHFPOS(C) UHFGND(C)	SSFPOSC6 SSFPOS16 SSFPOS	SSF5150D	UFM8	AFL530	AFM560	AFM1660	3TERM	ULF22	ULF28	UBF5150
Construction	Solid State	Solid State Control	100% Solid State	100% Solid State	100% Solid State	100% Solid State	100% Solid State	100% Solid State	Solid State Relay	100% Solid State	Solid State	Solid State
Connection	2006/2007 Dodge Magnum & Charger Police Package Plug Compatible	UHF2150 Bare Wire UHF2150B Impala Compatible Plug UHFPOS(C) Bare Wire with Mating Pigtail UHFGND(C) Bare Wire with Mating Pigtail	SSFPOSC6 '07 Crown Vic Police Interceptor Plug Compatible SSFPOS16 '06-'07 Chevy Impala Police Package '07 Chevy Tahoe Police Package Plug Compatible SSFPOS no connector	Mate-N-Lok with Pigtails	Mate-N-Lok™ with Mating Pigtails	7 Position Terminal Block	2 Position and 5 Position Terminal Blocks	Mate-N-Lok	Spade Lug	Mate-N-Lok with Pigtails	Mate-N-Lok with Pigtails	UBF5150 Bare Wire
Number of Outlets	n/a	2	2	4	8	5	5	16	2	2	8	4
Alt./Simult. Outlets (max)	n/a	1x1	1x1	2x2	4x4	2x3	2x3	8x8	1x1	1x1	4x4	2x2
Flash Patterns	n/a	4	7	5	17	4	4	4	1	14	9	1
FPM per Outlet	n/a	Flash Patterns	Flash Patterns	Flash Patterns	Flash Patterns	Flash Patterns	Flash Patterns	Flash Patterns	75	Flash Patterns	Flash Patterns	55
Input Voltage	12.8 V	12.8 V	12.8 V	12.8 V	12.8 V	12.8 V	12.8 V	12.8 V	12.8 V	12.8 V	10-30 V	12.8 V
Output Current per Outlet	n/a	12.5 amps	12.5 amps	5 amps	5 amps	3@10amps 2@5amps	3@20amps 2@10amps	5 amps	20 amps	5 amps	5 amps	5 amps
Output Power per Outlet	n/a	162 watts	162 watts	64 watts	75 watts	3@142 watts 2@71 watts	3@284 watts 2@142 watts	71 watts	240 watts	65 watts	64 watts	64 watts
Output Power Total	n/a	324 watts	324 watts	256 watts	600 watts	284 watts	568 watts	568 watts	480 watts	128 watts	128 watts	256 watts
Operating Voltages	10-16 VDC	10-16 VDC	10-16 VDC	10-16 VDC	10-16 VDC	10-16 VDC	10-16 VDC	10-16 VDC	10-16 VDC	10-16 VDC	10-30 VDC	10-16 VDC
Duty Cycle On/Off	n/a	50%	50%	50%	50%*	40%	40%	40%	50%	40%	40%	50%
On/Off Control Switching	Less than 20mA @ 13.5 VDC	175mA	20mA	20mA	50mA	20mA	20mA	20mA	n/a	n/a	20mA	Less than 150mA @ 13.5 VDC
Weather Protection	Encapsulated	Encapsulated	Encapsulated	Protected Encapsulated	Install	Protected Encapsulated	Protected Install	Install	Encapsulated	Encapsulated	Encapsulated	Encapsulated
Highbeam Override	n/a	yes	yes	n/a	n/a	n/a	n/a	n/a	n/a	n/a	n/a	n/a
Night Time Cutoff	n/a	yes	yes	n/a	n/a	n/a	n/a	n/a	n/a	n/a	n/a	n/a
Certifications	n/a	n/a	n/a	n/a	n/a	n/a	KKK-E	KKK-E	n/a	n/a	n/a	n/a

* Dependent on flash pattern, 50% in alternating mode, 150 FPM in single flash
 **2 outlets with 3 wire pairs each.

HEADLIGHT AND TAILLIGHT FLASHER REFERENCE CHART

Manufacture/Model	Year(s)	Headlight Flasher	Taillight Flasher
CHEVROLET			
Chevy Impala (Police Package)	2006-2007	SSFPOS16	standard with SSFPOS16
Chevy Impala (Non-Police Package)	2006-2007	none	none
Chevy Impala (Police Package)	2000-2005	UHF2150B	UBF5150B
Chevy Impala (Non-Police Package)	2004-2005	none	none
Silverado	2005-2006	UHFPOS	none
Suburban	2004-2006	UHFPOS	none
Tahoe (Police Package)	2006	UHFPOS	UBF5150
Tahoe (Non-Police Package)	2004-2006	UHF2150A	none
Tahoe (Police Package)	2007	SSFPOS16	standard with SSFPOS16
Tahoe (Non-Police Package) Suburban & Yukon	2007	UHF2150A	none
FORD			
Crown Victoria (Police Package)	2006-2007	SSFPOSC6	SSF5150D
Crown Victoria (Police Package)	2004-2005	UHF2150A or UHFPOS	UBF5150
Crown Victoria (Non-Police Package)	2004-2006	UHF2150A or UHFPOS	UBF5150
Expedition XL (Not XLT)	2004-2007	UHFPOS	UBF5150
Explorer XL (Not XLT)	2004-2007	UHFPOS	UBF5150
F-Series Pick-Up*	2004-2007	UHFPOS	UBF5150
DODGE			
Magnum	2006-2007	PEIMDC07	PEIMDC07
Charger	2006-2007	PEIMDC07	PEIMDC07
Intrepid (Police Package)	2004-2005	UHF2150A	IBF5150

*must have night-time cutoff activated (brown wire must be connected).



WHELEN[®]
ENGINEERING COMPANY, INC.

Route 145, Winthrop Road
Chester, Connecticut 06412-0684
(860) 526-9504 • Fax: (860) 526-4078
www.whelen.com



Whelen Engineering reserves the right to upgrade and improve products without notice.

© 2007 Whelen Engineering Company, Inc.
Printed in U.S.A. Form No. 11151F-0207